

# **AX On Desk Catalog Table of Contents**

## **Part Files:**

- 1) Arc Welding Consumables
- 2) Cameras
- 3) Controls & Enclosures
- 4) Conveyors
- 5) Dunnage & Containers
- 6) Fencing & Doors
- 7) Fume Extractors
- 8) Light Screens
- 9) Machines
- 10) Nachi / OTC standard products
- 11) Neumatics Brand Parts
- 12) Robot Grippers & E.O.A.T.
- 13) Robot Risers
- 14) Structural Objects
- 15) Tables, Stands, Utilities, & Fixtures
- 16) Water Chillers
- 17) Weld Timers
- 18) Welding Torches
- 19) Widgets

## **Work Cell Files:**

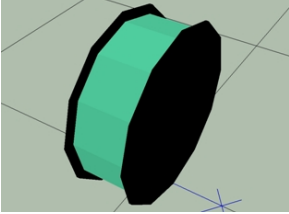
- 1) Glass Handling
- 2) Machine Tending
- 3) Material Handling
- 4) Material Removal
- 5) Miscellaneous
- 6) Vision
- 7) Welding

## Arc Welding Consumables:

**Part Name:** 33lb Spool

**Part Description:** Welding wire spool

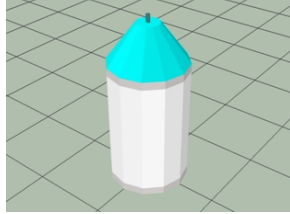
**Approximate Size:** 305mm D x 102mm W



**Part Name:** 500Lb drum w\_hood

**Part Description:** Welding wire drum with hood

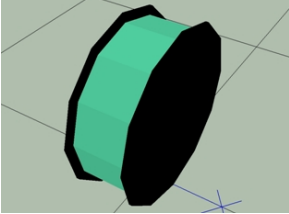
**Approximate Size:** 514mm D x 1126mm H



**Part Name:** 44lb Spool

**Part Description:** Welding wire spool

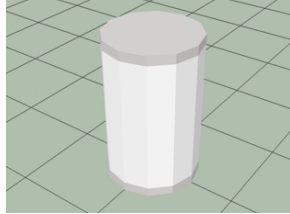
**Approximate Size:** 305mm D x 102mm W



**Part Name:** 500Lb drum

**Part Description:** Welding wire drum

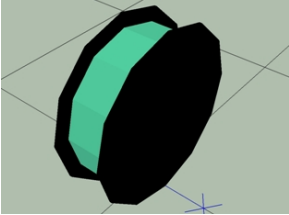
**Approximate Size:** 514mm D x 826mm H



**Part Name:** 60lb Spool

**Part Description:** Welding wire spool

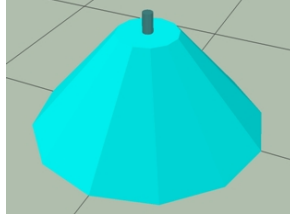
**Approximate Size:** 356mm D x 102mm W



**Part Name:** 900Lb drum hood

**Part Description:** Welding wire drum hood

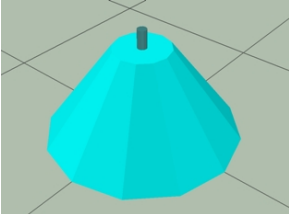
**Approximate Size:** 584mm D x 300mm H



**Part Name:** 500lb drum hood

**Part Description:** Welding wire drum hood

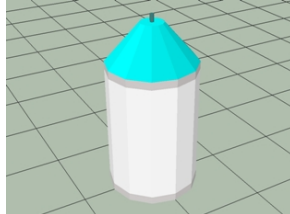
**Approximate Size:** 514mm D x 300mm H



**Part Name:** 900Lb drum w\_hood

**Part Description:** Welding wire drum hood

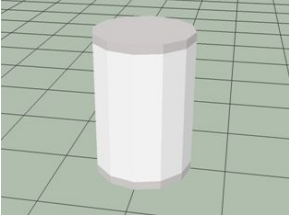
**Approximate Size:** 584mm D x 1164mm H



**Part Name:** 900Lb drum

**Part Description:** Welding wire drum

**Approximate Size:** 584mm D x 864mm H

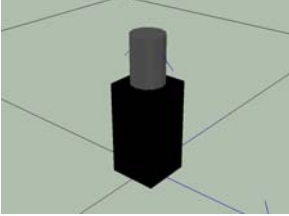


## Cameras:

**Part Name:** Camera 1

**Part Description:** Generic camera

**Approximate Size:** 50mm x 50mm x 150mm

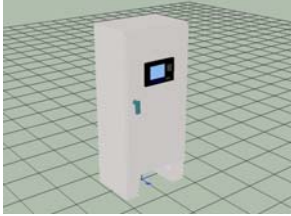


## Controls & Enclosures:

**Part Name:** 1 door cabinet w\_HMI

**Part Description:** Controls cabinet with HMI

**Approximate Size:** 640mm x 930mm x 2130mm



**Part Name:** Control panel

**Part Description:** Control panel

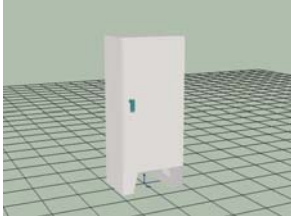
**Approximate Size:** 200mm x 300mm x 400mm



**Part Name:** 1 door cabinet

**Part Description:** Controls cabinet

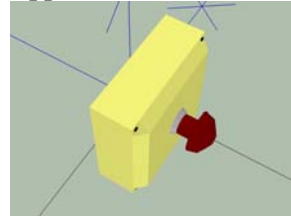
**Approximate Size:** 640mm x 930mm x 2130mm



**Part Name:** E-Stop Box

**Part Description:** E-Stop button in box

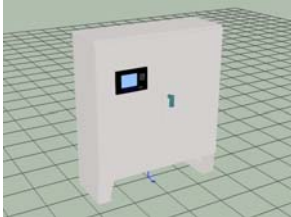
**Approximate Size:** 50mm x 120mm x 120mm



**Part Name:** 2 door cabinet w\_HMI

**Part Description:** Controls cabinet with HMI

**Approximate Size:** 640mm x 1830mm x 2130mm



**Part Name:** Panel view 1000 on pedestal

**Part Description:** Panel view 1000 on pedestal

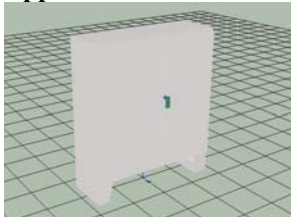
**Approximate Size:** 305mm x 463mm x 1165mm



**Part Name:** 2 door cabinet

**Part Description:** Controls cabinet

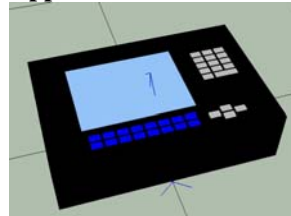
**Approximate Size:** 640mm x 1830mm x 2130mm



**Part Name:** Panel view 1000

**Part Description:** Panel view 1000

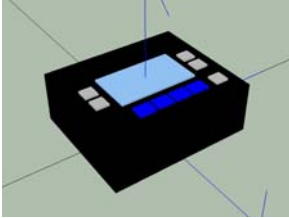
**Approximate Size:** 282mm x 485mm x 115mm



**Part Name:** PV300 Micro on pedestal  
**Part Description:** PV300 Micro on pedestal  
**Approximate Size:** 203mm x 203mm x 1000mm



**Part Name:** PV300 Micro  
**Part Description:** Panel View 300 Micro  
**Approximate Size:** 112mm x 133mm x 50mm



## Conveyors:

*Due to the large number of conveyors only one conveyor from each major series will be displayed. Available sizes will be listed.*

**Part Name:** Belt Conveyor 3

**Part Description:** Belt Conveyor

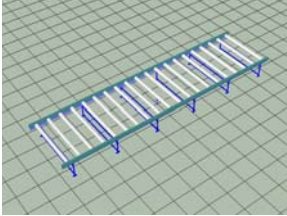
**Approximate Size:** 500mm x 1000mm x 500mm



**Part Name:** 6000 x 1350 Conveyor

**Part Description:** Panel view 1000 on pedestal

**Approximate Size:** 6000mm x 1350mm x 500mm



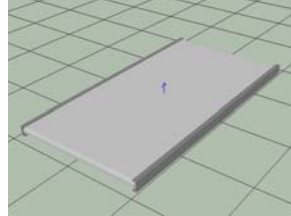
**Part Name:** Belt Conveyor

**Part Description:** Generic Belt Conveyor

**Available Widths:** 12", 24", 36", 48"

**Available Lengths:** 12", 24", 36", 48", 60", 72", 96", 120", 144"

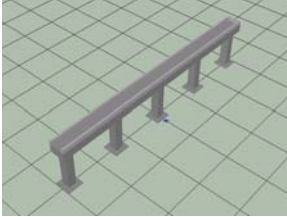
**Almost all combinations of width / length exist**



**Part Name:** Belt conveyor 1

**Part Description:** Narrow belt conveyor

**Approximate Size:** 3000mm x 195mm x 650mm



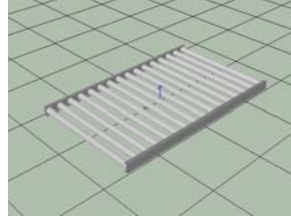
**Part Name:** Roller Conveyor

**Part Description:** Generic Roller Conveyor

**Available Widths:** 12", 24", 36", 48"

**Available Lengths:** 12", 24", 36", 48", 60", 72", 96", 120", 144"

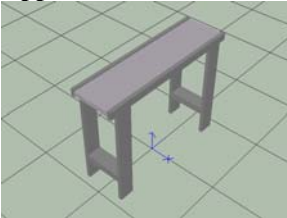
**Almost all combinations of width / length exist**



**Part Name:** Belt Conveyor 2

**Part Description:** Belt Conveyor

**Approximate Size:** 300mm x 1000mm x 700mm



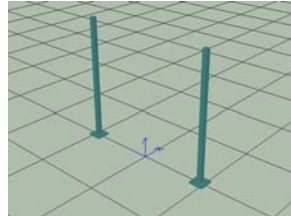
**Part Name:** Conveyor Legs

**Part Description:** Generic conveyor legs

**Available Widths:** 12", 24", 36", 48"

**Available Heights:** 36", 48"

**All combinations of width / length exist**

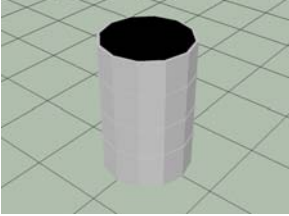


## Dunnage & Containers:

**Part Name:** 55 Gallon Drum

**Part Description:** 55 Gallon Drum

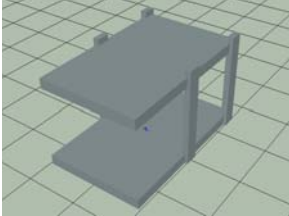
**Approximate Size:** 584 mm D x 889mm H



**Part Name:** Bin #1 Rack

**Part Description:** Bin holding rack

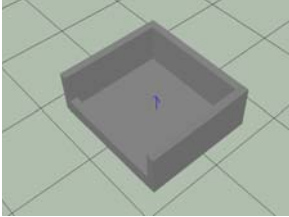
**Approximate Size:** 960 mm x 1500mm x 960mm



**Part Name:** Bin #2

**Part Description:** Bin holding rack

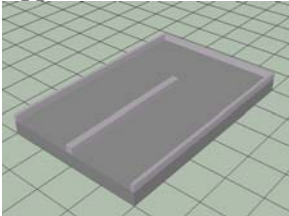
**Approximate Size:** 700 mm x 795mm x 300mm



**Part Name:** Bin #3 Rack

**Part Description:** Bin holding rack

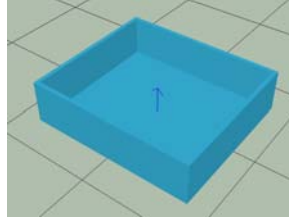
**Approximate Size:** 3000 mm x 2000mm x 300mm



**Part Name:** Bin #1

**Part Description:** Part Bin

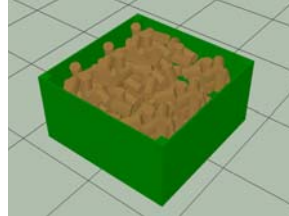
**Approximate Size:** 700 mm x 800mm x 210mm



**Part Name:** Bin #3 w\_random cylindrical parts

**Part Description:** Part bin with cylindrical parts

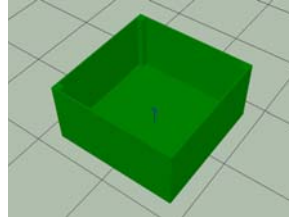
**Approximate Size:** 800 mm x 800mm x 420mm



**Part Name:** Bin #3

**Part Description:** Part Bin

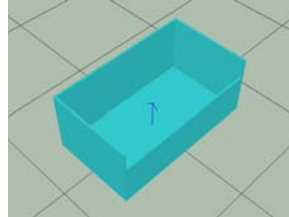
**Approximate Size:** 800 mm x 800mm x 420mm



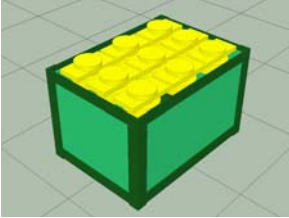
**Part Name:** Bin #4

**Part Description:** Part Bin

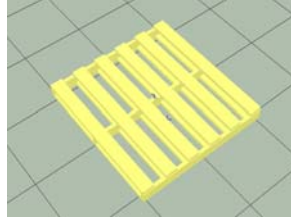
**Approximate Size:** 400 mm x 700mm x 300mm



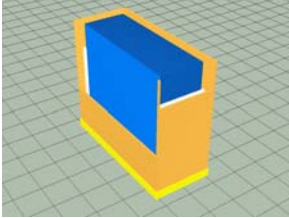
**Part Name:** Bin of Widgets  
**Part Description:** Part bin full of widget parts  
**Approximate Size:** 500 mm x 705mm x 445mm



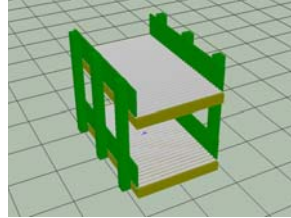
**Part Name:** Pallet  
**Part Description:** Industry standard pallet  
**Approximate Size:** 1045 mm x 1095mm x 130mm



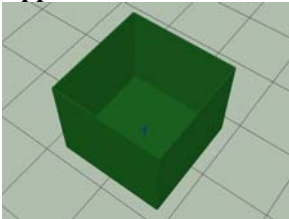
**Part Name:** Box of Glass Sheets  
**Part Description:** Box of Glass Sheets  
**Approximate Size:** 1075mm x 2572mm x 2234mm



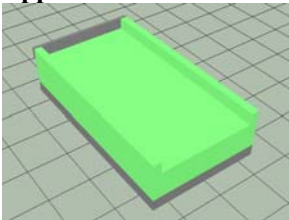
**Part Name:** Roller Bin Rack  
**Part Description:** Dual layer roller bin rack  
**Approximate Size:** 1500mm x 1090mm x 1200mm



**Part Name:** Large part bin  
**Part Description:** Part bin  
**Approximate Size:** 800 mm x 800mm x 690mm



**Part Name:** Pallet Bin  
**Part Description:** Bin for holding pallets  
**Approximate Size:** 2550 mm x 1400mm x 650mm



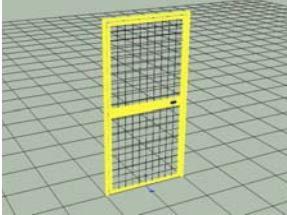
## Fencing & Doors:

*Due to the large number of fences only 1 fence from each major series will be displayed. Available sizes will be listed.*

**Part Name:** Closed Door

**Part Description:** Work cell door closed

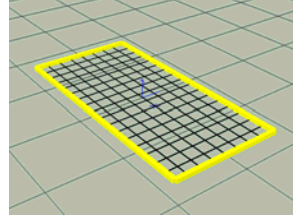
**Approximate Size:** 1005mm x 1980mm x 30mm



**Part Name:** Fence 2

**Part Description:** Generic cell fence horizontal

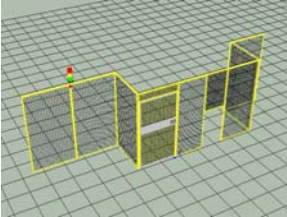
**Approximate Size:** 1730mm x 830mm x 30mm



**Part Name:** Fence wall w\_door

**Part Description:** Work cell door & walls

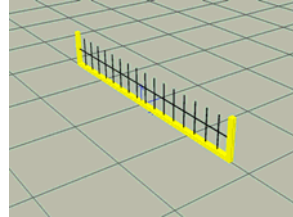
**Approximate Size:** 6355mm x 1100mm x 2000mm



**Part Name:** Fence 3

**Part Description:** Small fence piece

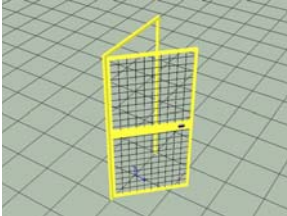
**Approximate Size:** 1730mm x 280mm x 30mm



**Part Name:** Open Door

**Part Description:** Work cell door open

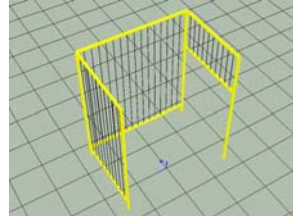
**Approximate Size:** 1005mm x 1980mm x 30mm



**Part Name:** Fence 4

**Part Description:** Partial fence enclosure

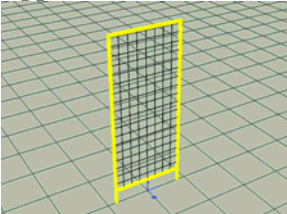
**Approximate Size:** 1980mm x 1115mm x 1630mm



**Part Name:** Fence 1

**Part Description:** Generic cell fence vertical

**Approximate Size:** 1980mm x 830mm x 30mm

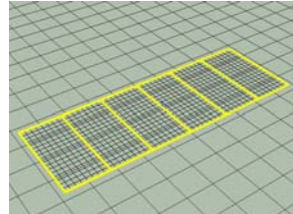


**Part Name:** Horizontal Fence

**Part Description:** Generic horizontal cell fence

**Approximate Size:** 1730mm H x 30mm D

**Available Widths:** 830mm, 1630mm, 2430mm, 3230mm, 4030mm, 4830mm

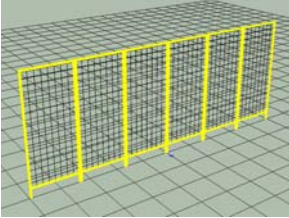


**Part Name:** Vertical Fence

**Part Description:** Generic vertical cell fence

**Approximate Size:** 1980mm H x 30mm D

**Available Widths:** 500mm, 830mm, 1000mm,  
1660mm, 2490mm, 3320mm, 4150mm, 4980mm

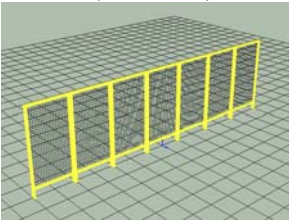


**Part Name:** Vertical Fence

**Part Description:** Generic vertical cell fence

**Approximate Size:** 2000mm H x 50.8mm D

**Available Widths:** 500mm, 1000mm, 2000mm,  
3000mm, 4000mm, 5000mm, 6000mm, 7000mm



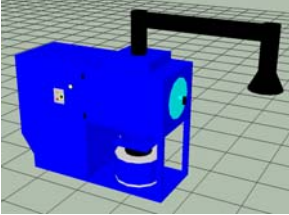
## **Fume Extractors:**

*There are a total of six fume extractors available. Each fume extractor is identical except for the position of the suction tube. Only one extractor will be pictured below.*

**Part Name:** Torit DFO

**Part Description:** Welding fume extractor

**Approximate Size:** 1980mm x 1115mm x 1630mm



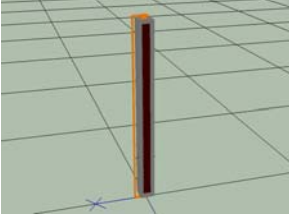
## Light Screens:

*Due to the large number of light screens available only one from each major series will be displayed. All sizes will be listed.*

**Part Name:** 500mm Light Screen

**Part Description:** Generic light screen

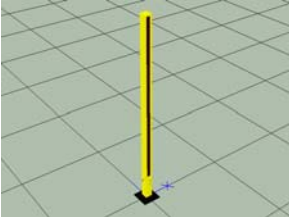
**Approximate Size:** 500mm x 40mm x 40mm



**Part Name:** 900mm Vertical Light Screen

**Part Description:** Generic light screen

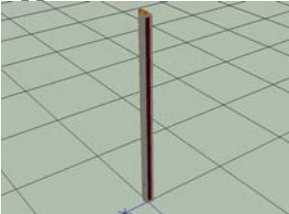
**Approximate Size:** 1045mm x 38mm x 38mm



**Part Name:** 1000mm Light Screen

**Part Description:** Generic light screen

**Approximate Size:** 1000mm x 40mm x 40mm

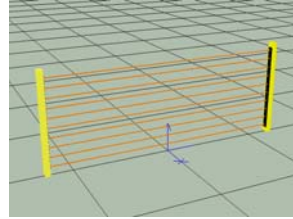


**Part Name:** 18x48 Light Screen

**Part Description:** 18 Inch light screen

**Approximate Length:** 18in (457.2mm)

**Available Widths:** 48in, 60in, 72in

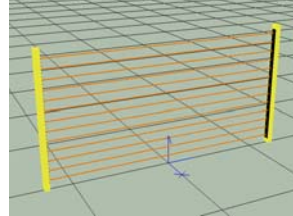


**Part Name:** 24x48 Light Screen

**Part Description:** 24 Inch light screen

**Approximate Length:** 24in (609.6mm)

**Available Widths:** 48in, 60in, 72in

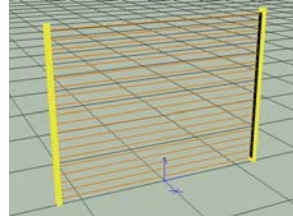


**Part Name:** 36x48 Light Screen

**Part Description:** 36 Inch light screen

**Approximate Length:** 36in (914.4mm)

**Available Widths:** 48in, 60in, 72in

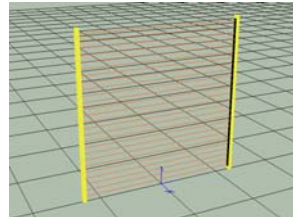


**Part Name:** 48x48 Light Screen

**Part Description:** 48 Inch light screen

**Approximate Length:** 48in (1219.2mm)

**Available Widths:** 48in, 60in, 72in



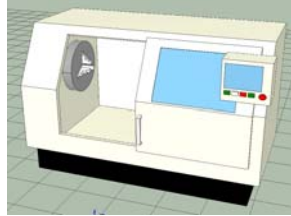
## Machines:

*Files include broaching, drilling, machining, and press machines. These files can be used to simulate various work processes.*

**Part Name:** Machining Center 1

**Part Description:** Lathe machining center

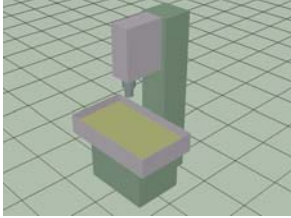
**Approximate Size:** 1400mm x 2880mm x 1800mm



**Part Name:** Broach Machine 1

**Part Description:** Generic broaching machine

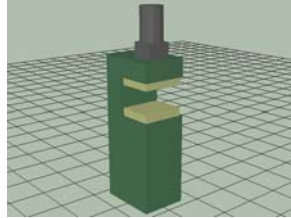
**Approximate Size:** 1700mm x 1000mm x 900mm



**Part Name:** Press 1

**Part Description:** Generic Press

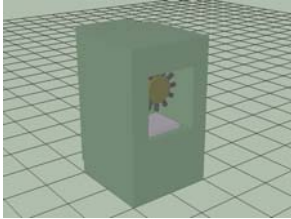
**Approximate Size:** 1700mm x 1000mm x 1300mm



**Part Name:** Drilling Center

**Part Description:** Generic drilling machine

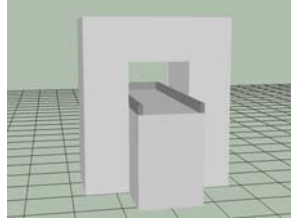
**Approximate Size:** 1700mm x 1000mm x 1300mm



**Part Name:** Press 2

**Part Description:** Generic Press

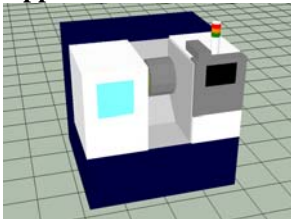
**Approximate Size:** 2000mm x 1700mm x 2200mm



**Part Name:** Okuma LB2000EX Machining Center

**Part Description:** Okuma Machining Center

**Approximate Size:** 1770mm x 1735mm x 1855mm



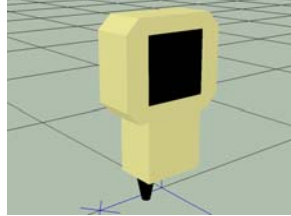
**Nachi / OTC Standard Products:**

*Nachi and OTC standard products include controllers, teach pendant, welding power supplies, and standard work cells.*

**Part Name:** AX Teach Pendant

**Part Description:** AX Robot Teach Pendant

**Approximate Size:** 295mm x 205mm x 80mm



**Part Name:** AX10

**Part Description:** AX10 Robot Controller

**Approximate Size:** 1181mm x 600mm x 555mm



**Part Name:** AXC

**Part Description:** AXC Robot Controller

**Approximate Size:** 1110mm x 560mm x 508mm



**Part Name:** AX20

**Part Description:** AX20 Robot Controller

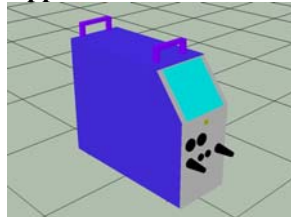
**Approximate Size:** 1275mm x 550mm x 450mm



**Part Name:** DP400

**Part Description:** OTC DP400 Power Supply

**Approximate Size:** 635mm x 250mm x 600mm



**Part Name:** AX20\_w\_TP

**Part Description:** AX20 with Teach Pendant

**Approximate Size:** 1275mm x 550mm x 450mm



**Part Name:** DP500

**Part Description:** OTC DP500 Power Supply

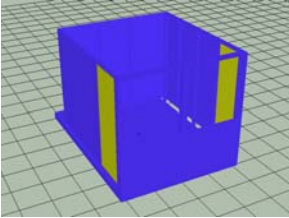
**Approximate Size:** 635mm x 300mm x 600mm



**Part Name:** E120 Empty

**Part Description:** E120 Empty Workcell

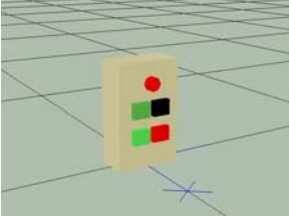
**Approximate Size:** 2050mm x 2175mm x 3075mm



**Part Name:** Operation Box

**Part Description:** Operation Box

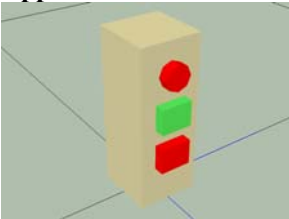
**Approximate Size:** 180mm x 110mm x 60mm



**Part Name:** Start Box

**Part Description:** Start Box

**Approximate Size:** 160mm x 60mm x 60mm



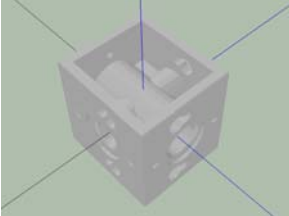
## Neumatics Brand Parts:

*Neumatics Brand Parts were downloaded from the Neumatics website and imported into AX On Desk. These items are for display purposes only, no affiliation with Neumatics is expressed or implied.*

**Part Name:** Diverter Block DK32

**Part Description:** Pneumatic diverter block

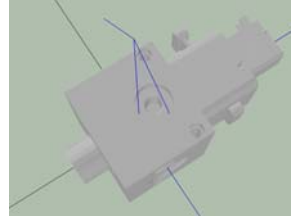
**Approximate Size:** 69mm x 75mm x 69mm



**Part Name:** Quick Exhaust Valve S32E

**Part Description:** Pneumatic Exhaust Valve

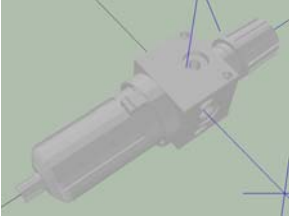
**Approximate Size:** 180mm x 110mm x 60mm



**Part Name:** Filter Regulator C32E

**Part Description:** Pneumatic Filter Regulator

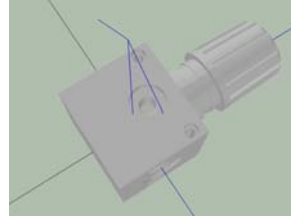
**Approximate Size:** 308mm x 75mm x 75mm



**Part Name:** Regulator R32R

**Part Description:** Pneumatic Regulator

**Approximate Size:** 150mm x 75mm x 75mm



**Part Name:** FLR Assembly M32

**Part Description:** Filter Lubricator Regulator

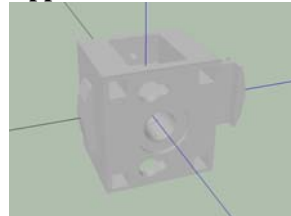
**Approximate Size:** 308mm x 284mm x 75mm



**Part Name:** Shut Off Valve VS32

**Part Description:** Operation Box

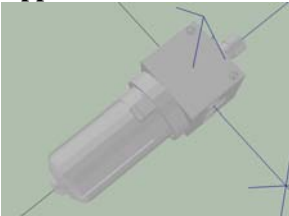
**Approximate Size:** 180mm x 110mm x 60mm



**Part Name:** Lubricator L32L

**Part Description:** Pneumatic Lubricator

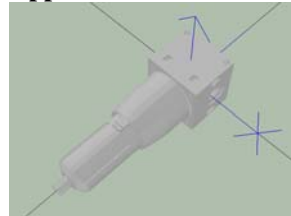
**Approximate Size:** 245mm x 75mm x 75mm



**Part Name:** Filter F42B

**Part Description:** Pneumatic Filter

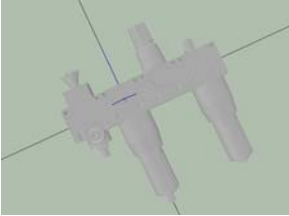
**Approximate Size:** 320mm x 100mm x 100mm



**Part Name:** FLR assembly M42

**Part Description:** Filter Lubricator Regulator

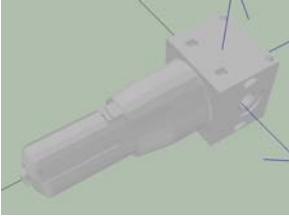
**Approximate Size:** 441mm x 400mm x 100mm



**Part Name:** Lubricator L42L

**Part Description:** Pneumatic Lubricator

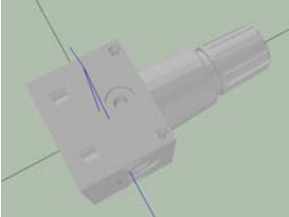
**Approximate Size:** 335mm x 100mm x 100mm



**Part Name:** Regulator R42K

**Part Description:** Pneumatic Regulator

**Approximate Size:** 205mm x 100mm x 100mm



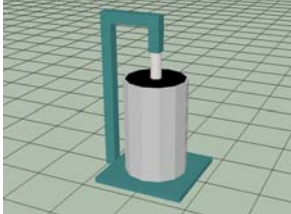
## Robot Grippers & E.O.A.T:

*Due to the large number of similar end of arm tooling (EOAT) items only one from each major category will be pictured. All sizes will be listed.*

**Part Name:** Dispense station 55 gallon drum

**Part Description:** Sealant dispensing station

**Approximate Size:** 1500mm x 840mm x 840mm

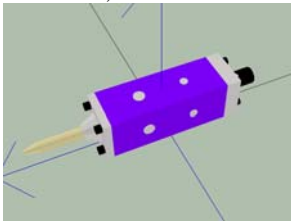


**Part Name:** Nordson AG900 + 47.7mm nozzle

**Part Description:** Nordson sealant dispense gun

**Approximate Size:** 200mm x 38mm x 38mm

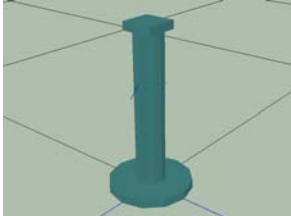
**Available Nozzle Lengths:** 47.7mm, 87.7mm, 162.7mm, 312.7mm



**Part Name:** 200mm Tool Extension

**Part Description:** Tool Extension

**Approximate Size:** 200mm x 100mm

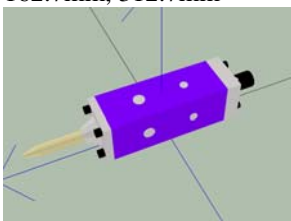


**Part Name:** Extended AG900 + 47.7mm nozzle

**Part Description:** Nordson sealant dispense gun

**Approximate Size:** 200mm x 238mm x 100mm

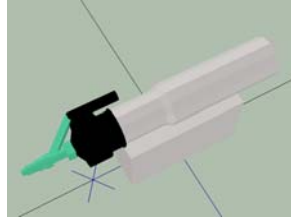
**Available Nozzle Lengths:** 47.7mm, 87.7mm, 162.7mm, 312.7mm



**Part Name:** Nelson KSE100

**Part Description:** Nelson stud welding gun

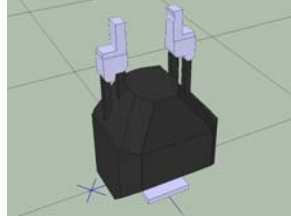
**Approximate Size:** 386mm x 160mm



**Part Name:** 2-Finger FLEXhand

**Part Description:** Nachi FLEXhand

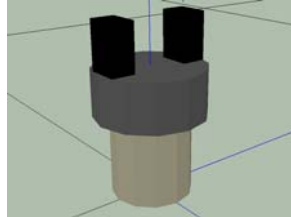
**Approximate Size:** 220mm x 185mm x 395mm



**Part Name:** 2-Finger Gripper

**Part Description:** Generic 2-finger gripper

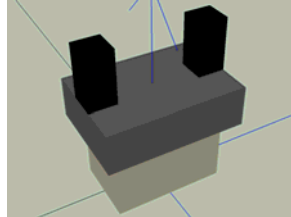
**Approximate Size:** 110mm x 65mm



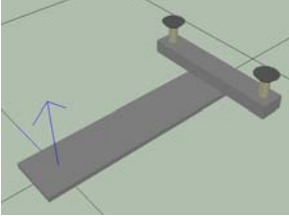
**Part Name:** 2-Finger Gripper 2

**Part Description:** Generic 2-finger gripper

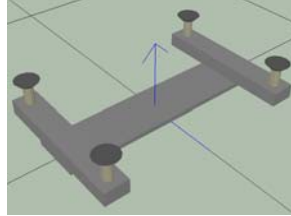
**Approximate Size:** 120mm x 100mm x 70mm



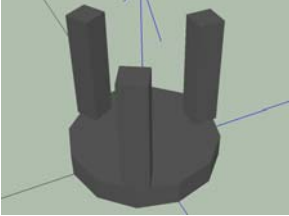
**Part Name:** 2-Suction Cup Gripper  
**Part Description:** Suction cup gripper tool  
**Approximate Size:** 450mm x 300mm x 40mm



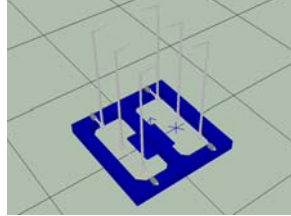
**Part Name:** 4-Suction Cup Gripper  
**Part Description:** Suction cup gripper tool  
**Approximate Size:** 450mm x 300mm x 40mm



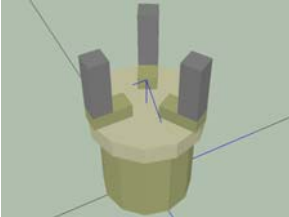
**Part Name:** 3-Finger Gripper Stand  
**Part Description:** 3-Finger Gripper Stand  
**Approximate Size:** 110mm x 120mm



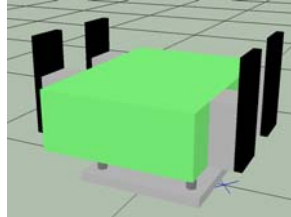
**Part Name:** Box Gripper  
**Part Description:** Box gripper tool  
**Approximate Size:** 500mm x 500mm x 565mm



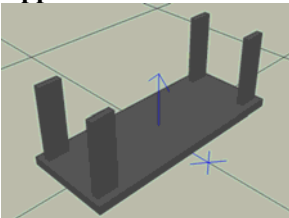
**Part Name:** 3-Finger Gripper  
**Part Description:** Generic 3-finger gripper  
**Approximate Size:** 195mm x 120mm



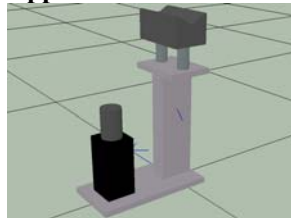
**Part Name:** Box Gripper 2  
**Part Description:** Box gripper tool  
**Approximate Size:** 425mm x 400mm x 300mm



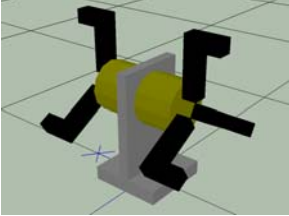
**Part Name:** 4-Suction Cup Gripper Stand  
**Part Description:** 4-Suction Cup Gripper Stand  
**Approximate Size:** 500mm x 200mm x 200mm



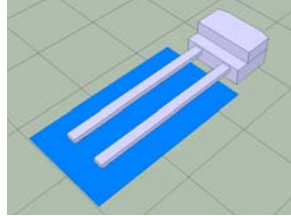
**Part Name:** Camera+MagnetHand  
**Part Description:** Camera + gripper tool  
**Approximate Size:** 300mm x 200mm x 100mm



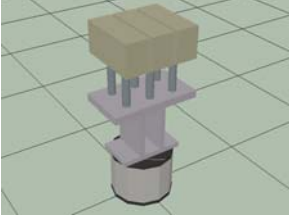
**Part Name:** Dual 3-Finger Gripper  
**Part Description:** Dual 3-Finger Gripper  
**Approximate Size:** 325mm x 265mm x 325mm



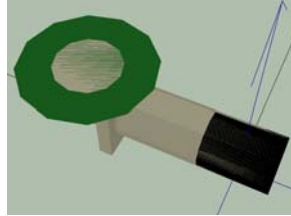
**Part Name:** Glass Sheet Gripper 3  
**Part Description:** Glass gripping tool  
**Approximate Size:** 1610mm x 250mm x 650mm



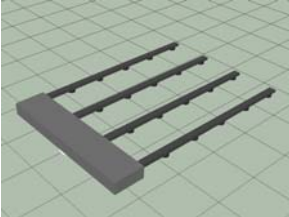
**Part Name:** Electromagnetic Gripper  
**Part Description:** Electromagnetic gripping toll  
**Approximate Size:** 725mm x 350mm x 250mm



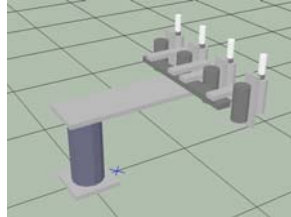
**Part Name:** Grinder Deburr Tool  
**Part Description:** Bench grinder  
**Approximate Size:** 185mm x 55mm x 100mm



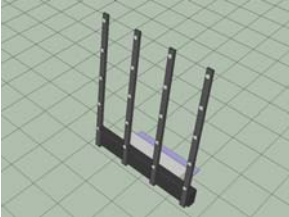
**Part Name:** Glass Sheet Gripper  
**Part Description:** Glass gripping tool  
**Approximate Size:** 1700mm x 2410mm x 150mm



**Part Name:** Nail Gun  
**Part Description:** 4-Nail gun  
**Approximate Size:** 745mm x 540mm x 655mm



**Part Name:** Glass Sheet Gripper 2  
**Part Description:** Glass gripping tool  
**Approximate Size:** 1640mm x 2500mm x 660mm

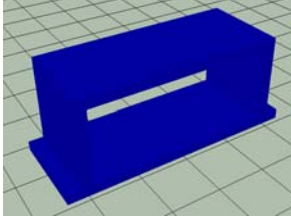


## Robot Risers:

**Part Name:** Hollow Robot Riser

**Part Description:** 1 Meter robot riser

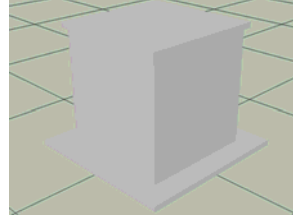
**Approximate Size:** 2400mm x 1000mm x 900mm



**Part Name:** Robot Riser 400mm

**Part Description:** 400mm robot riser

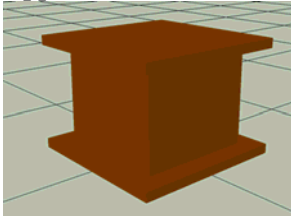
**Approximate Size:** 500mm x 500mm x 400mm



**Part Name:** Riser 300mm

**Part Description:** 300mm robot riser

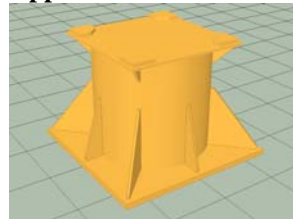
**Approximate Size:** 400mm x 400mm x 300mm



**Part Name:** SC400 riser 1050mm

**Part Description:** 1050mm robot riser

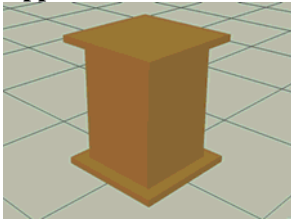
**Approximate Size:** 1410mm x 1410mm x 1050mm



**Part Name:** Riser 500mm

**Part Description:** 500mm robot riser

**Approximate Size:** 400mm x 400mm x 500mm



**Part Name:** SC400 riser 2300mm

**Part Description:** 2300mm robot riser

**Approximate Size:** 1410mm x 1410mm x 2300mm



**Part Name:** Robot Riser 700mm

**Part Description:** 700mm robot riser

**Approximate Size:** 1210mm x 1210mm x 700mm



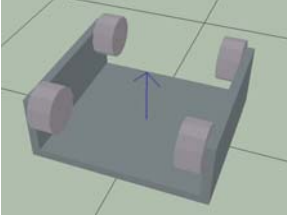
## Structural Objects:

*Due to the large number of structural objects only one object from each major category will be pictured. All sizes will be listed.*

**Part Name:** I-beam roller hanger

**Part Description:** Roller hanger for I-beam

**Approximate Size:** 390mm x 350mm x 175mm

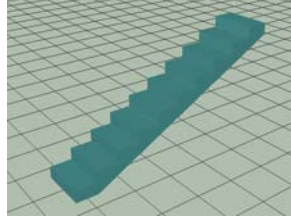


**Part Name:** 10 stairs

**Part Description:** flight of stairs

**Staircase Width:** 2 feet

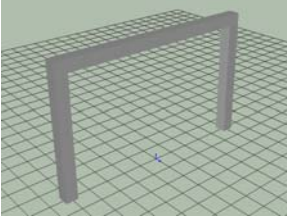
**Available sizes (# of stairs):** 3, 5, 7, 10



**Part Name:** Robot Invert Frame

**Part Description:** Frame for robot inversion

**Approximate Size:** 300mm x 5324mm x 3300mm

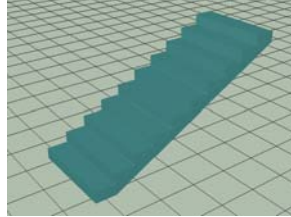


**Part Name:** 10 stairs

**Part Description:** flight of stairs

**Staircase Width:** 4 feet

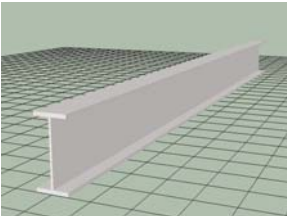
**Available sizes (# of stairs):** 3, 5, 7, 10



**Part Name:** XX ft heavy duty

**Part Description:** heavy duty I beam

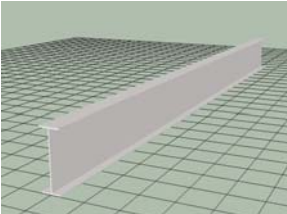
**Available Lengths (feet):** 4, 5, 6, 8, 10, 12, 14, 16, 18, 21, 24, 27, 30, 33, 36



**Part Name:** XX ft light duty

**Part Description:** light duty I beam

**Available Lengths (feet):** 4, 5, 6, 8, 10, 12, 14, 16, 18, 21, 24, 27, 30, 33, 36

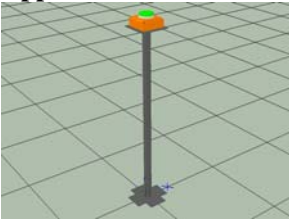


## Tables, Stands, Utilities, & Fixtures:

**Part Name:** Button Stand

**Part Description:** Controls button on stand

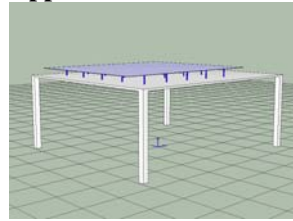
**Approximate Size:** 200mm x 200mm x 1100mm



**Part Name:** Glass Sheet Stand 1285mm

**Part Description:** Horizontal glass sheet stand

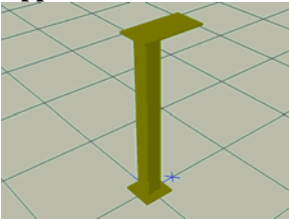
**Approximate Size:** 2940mm x 2600mm x 1287mm



**Part Name:** Camera Stand

**Part Description:** Stationary camera stand

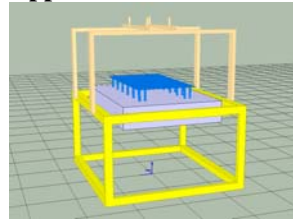
**Approximate Size:** 300mm x 150mm x 810mm



**Part Name:** Glass Sheet Stand 2

**Part Description:** Horizontal glass sheet stand

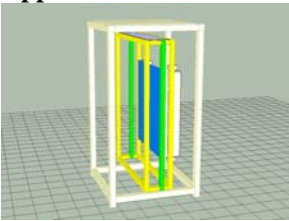
**Approximate Size:** 1640mm x 1620mm x 1845mm



**Part Name:** Glass Carrier Stand

**Part Description:** Vertical glass sheet stand

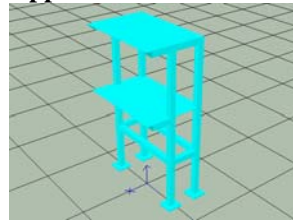
**Approximate Size:** 2780mm x 2400mm x 4484mm



**Part Name:** IMTS 2008 Parts Stand

**Part Description:** Dual layer parts stand

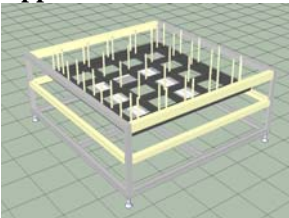
**Approximate Size:** 405mm x 610mm x 1112mm



**Part Name:** Glass Sheet Stand

**Part Description:** Horizontal glass sheet stand

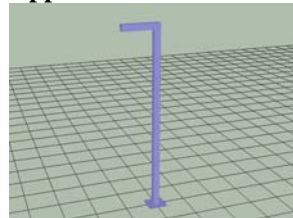
**Approximate Size:** 2600mm x 2750mm x 1200mm



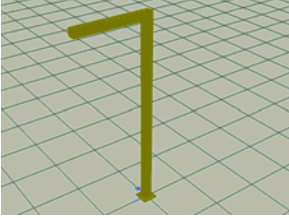
**Part Name:** Overhead Camera Stand

**Part Description:** Overhead camera stand

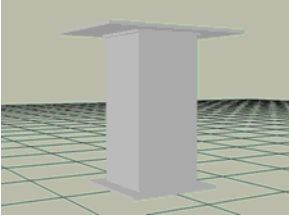
**Approximate Size:** 700mm x 300mm x 2990mm



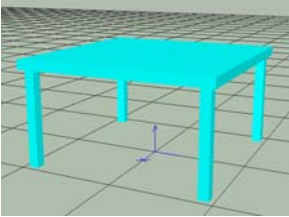
**Part Name:** Overhead Camera Stand 2  
**Part Description:** Overhead camera stand  
**Approximate Size:** 150mm x 785mm x 1975mm



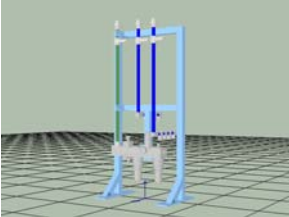
**Part Name:** Part Stand 835mm  
**Part Description:** Parts table  
**Approximate Size:** 600mm x 800mm x 835mm



**Part Name:** Table  
**Part Description:** Generic table  
**Approximate Size:** 1000mm x 1000mm x 550mm



**Part Name:** Utility Stand  
**Part Description:** Nachi utility stand  
**Approximate Size:** 600mm x 700mm x 1520mm

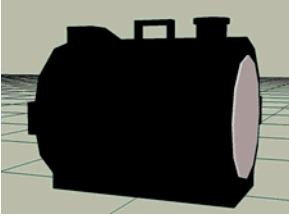


## **Water Chillers:**

**Part Name:** Coolmate 4

**Part Description:** Coolmate 4 water chiller

**Approximate Size:** 485mm x 425mm x 435mm

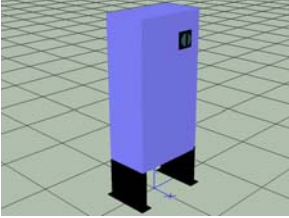


## Weld Timers:

**Part Name:** Dengensha

**Part Description:** Dengensha weld timer

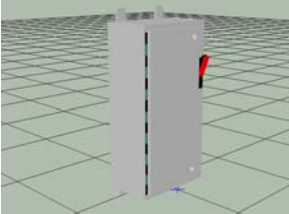
**Approximate Size:** 312mm x 525mm x 1160mm



**Part Name:** Medweld 3000

**Part Description:** Medar Medweld 3000

**Approximate Size:** 300mm x 5324mm x 3300mm



**Part Name:** Nelson N3

**Part Description:** Nelson N3

**Approximate Size:** 620mm x 708mm x 910mm

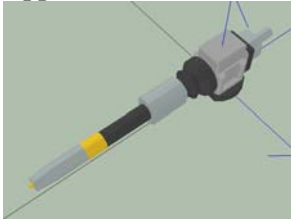


## Welding Torches:

**Part Name:** MTX-3531

**Part Description:** OTC GMAW torch

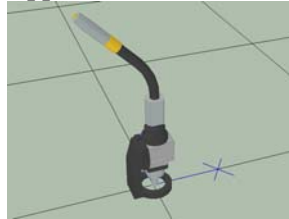
**Approximate Size:** 355mm x 69mm x 65mm



**Part Name:** MTXC-3531 AP

**Part Description:** OTC GMAW torch

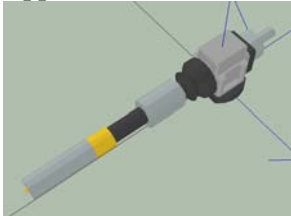
**Approximate Size:** 165mm x 69mm x 365mm



**Part Name:** MTX-5031

**Part Description:** OTC GMAW torch

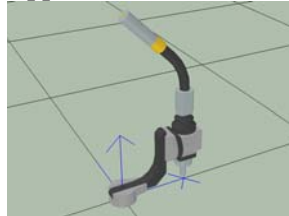
**Approximate Size:** 355mm x 69mm x 65mm



**Part Name:** MTXC-5031

**Part Description:** OTC GMAW torch

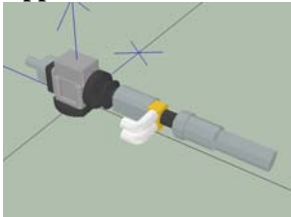
**Approximate Size:** 200mm x 69mm x 400mm



**Part Name:** MTXW-5031

**Part Description:** OTC GMAW torch

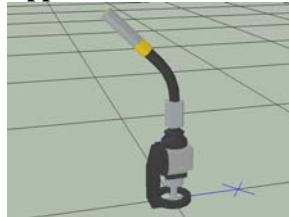
**Approximate Size:** 355mm x 69mm x 65mm



**Part Name:** MTXW-5031 AP

**Part Description:** OTC GMAW torch

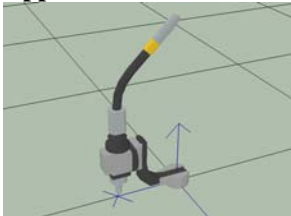
**Approximate Size:** 165mm x 69mm x 365mm



**Part Name:** MTXC-3531

**Part Description:** OTC GMAW torch

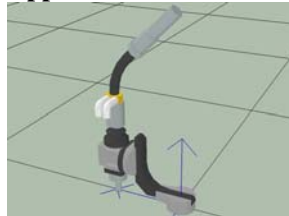
**Approximate Size:** 200mm x 69mm x 400mm



**Part Name:** MTXCW-5031

**Part Description:** OTC GMAW torch

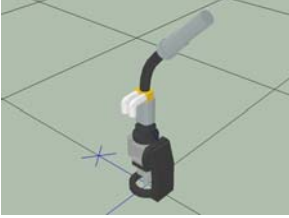
**Approximate Size:** 200mm x 69mm x 400mm



**Part Name:** MTXCW-5031 AP

**Part Description:** OTC GMAW torch

**Approximate Size:** 165mm x 69mm x 400mm

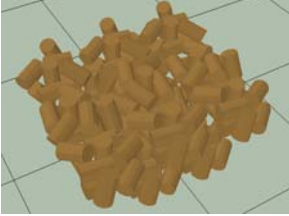


## Widgets:

**Part Name:** Random Cylindrical Parts

**Part Description:** Random cylindrical parts

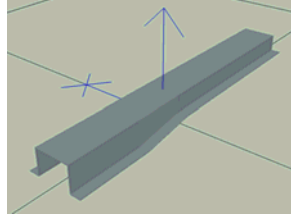
**Approximate Size:** 750mm x 750mm x 300mm



**Part Name:** Widget #4

**Part Description:** Widget part

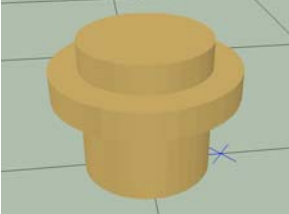
**Approximate Size:** 80mm x 450mm x 450mm



**Part Name:** Widget #1

**Part Description:** Widget part

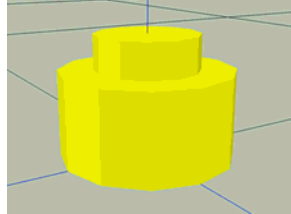
**Approximate Size:** 330mm x 250mm



**Part Name:** Widget #5

**Part Description:** Widget part

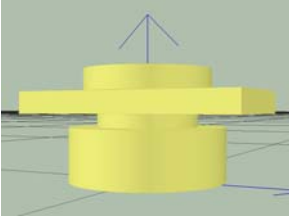
**Approximate Size:** 100mm x 70mm



**Part Name:** Widget #2

**Part Description:** Widget part

**Approximate Size:** 205mm x 140mm



**Part Name:** Widget #3

**Part Description:** Widget part

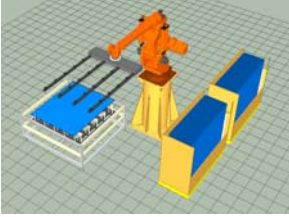
**Approximate Size:** 80mm x 90mm



## Glass Handling Cells:

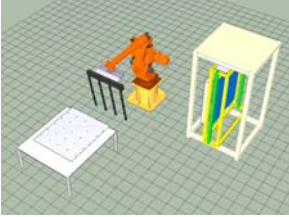
**Cell Name:** SC400LC Glass Handling Cell 1

**Cell Description:** Glass handling work cell



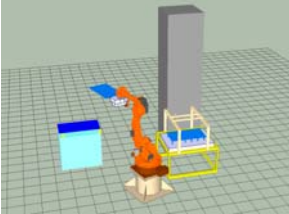
**Cell Name:** SC400LC Glass Handling Cell 2

**Cell Description:** Glass handling work cell



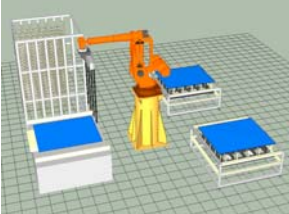
**Cell Name:** SH133C Glass Handling Cell

**Cell Description:** Glass handling work cell



**Cell Name:** SC400L Glass Handling Cell 3

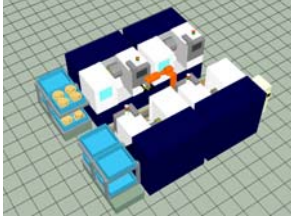
**Cell Description:** Glass handling work cell



## Machine Tending Cells:

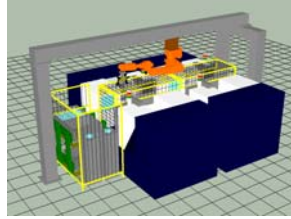
**Cell Name:** MC20 Loading 4 Machines 1

**Cell Description:** Machine tending work cell



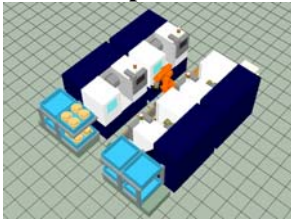
**Cell Name:** MC20 Loading Ceiling Mount 3

**Cell Description:** Machine tending work cell



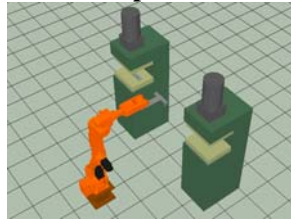
**Cell Name:** MR20 Loading 4 Machines 1

**Cell Description:** Machine tending work cell



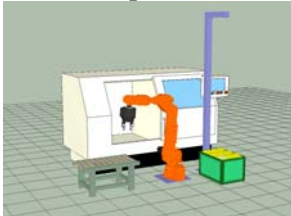
**Cell Name:** MC20 Press Tending

**Cell Description:** Press tending work cell



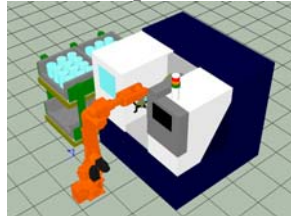
**Cell Name:** MC20 Loading Casting Parts

**Cell Description:** Machine tending work cell



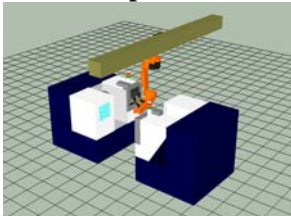
**Cell Name:** MC20 Loading 1 Machine

**Cell Description:** Machine tending work cell



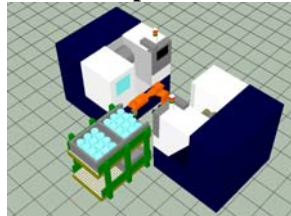
**Cell Name:** MC20 Loading Ceiling Mount

**Cell Description:** Machine tending work cell



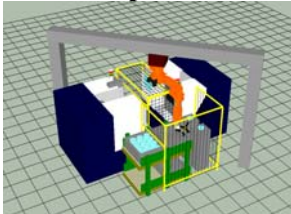
**Cell Name:** MC20 Loading 2 Machines

**Cell Description:** Machine tending work cell



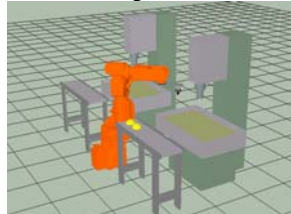
**Cell Name:** MC20 Loading Ceiling Mount 2

**Cell Description:** Machine tending work cell



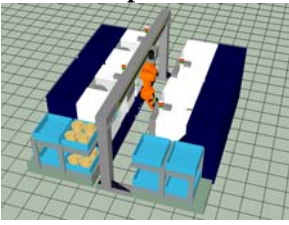
**Cell Name:** MR20 Loading Broach

**Cell Description:** Machine tending work cell



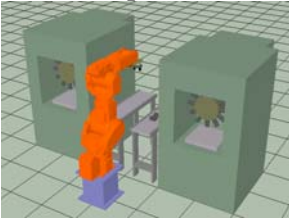
**Cell Name:** MR20 Loading Ceiling

**Cell Description:** Machine tending work cell



**Cell Name:** MR20 Loading Drill Center

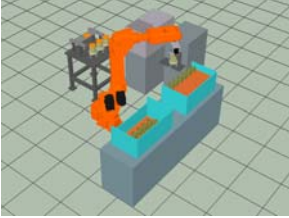
**Cell Description:** Machine tending work cell



## Material Handling Cells:

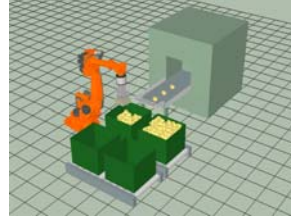
**Cell Name:** MC20 Picking Piston

**Cell Description:** MC20 handling engine pistons



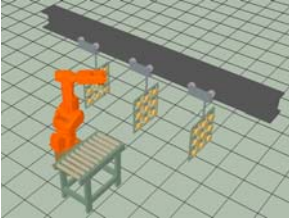
**Cell Name:** ST166 Picking

**Cell Description:** ST166 picking random parts



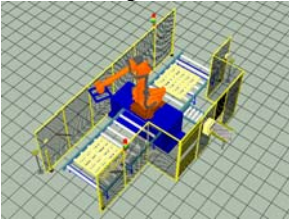
**Cell Name:** MR20 Picking Hanger

**Cell Description:** Picking from hanger conveyor



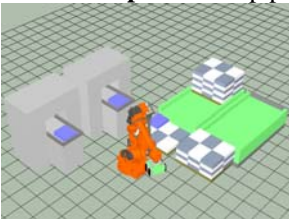
**Cell Name:** ST166 Palletizing

**Cell Description:** Palletizing work cell



**Cell Name:** ST166 Palletizing Scrap

**Cell Description:** Scrap palletizing work cell

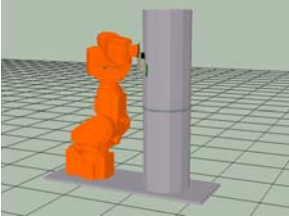


## Material Removal Cells:

Material removal cells are shown on the top of this page in the next column.

**Cell Name:** MR20 Grinding

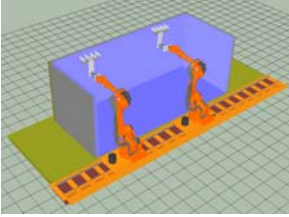
**Cell Description:** MR20 grinding weld bead



## Miscellaneous Cells:

**Cell Name:** ST200 Nailing

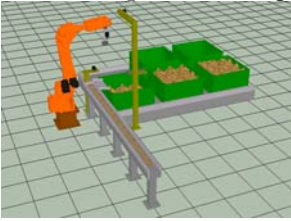
**Cell Description:** 2-ST200's nailing boards



## Vision Application Cells:

**Cell Name:** MC20 Picking

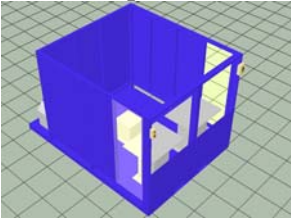
**Cell Description:** MC20 picking w/vision



## Welding Cells:

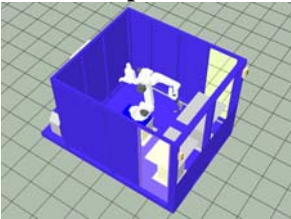
**Cell Name:** E120 Work Cell

**Cell Description:** E120 cell empty



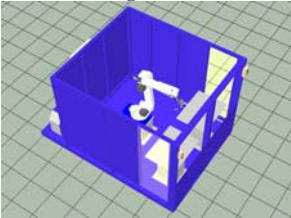
**Cell Name:** E120 w\_MV04

**Cell Description:** E120 with MV04 robot



**Cell Name:** E120 w\_MV06

**Cell Description:** E120 with MV06 robot



**Cell Name:** E120 w\_MV16

**Cell Description:** E120 with MV16 robot

