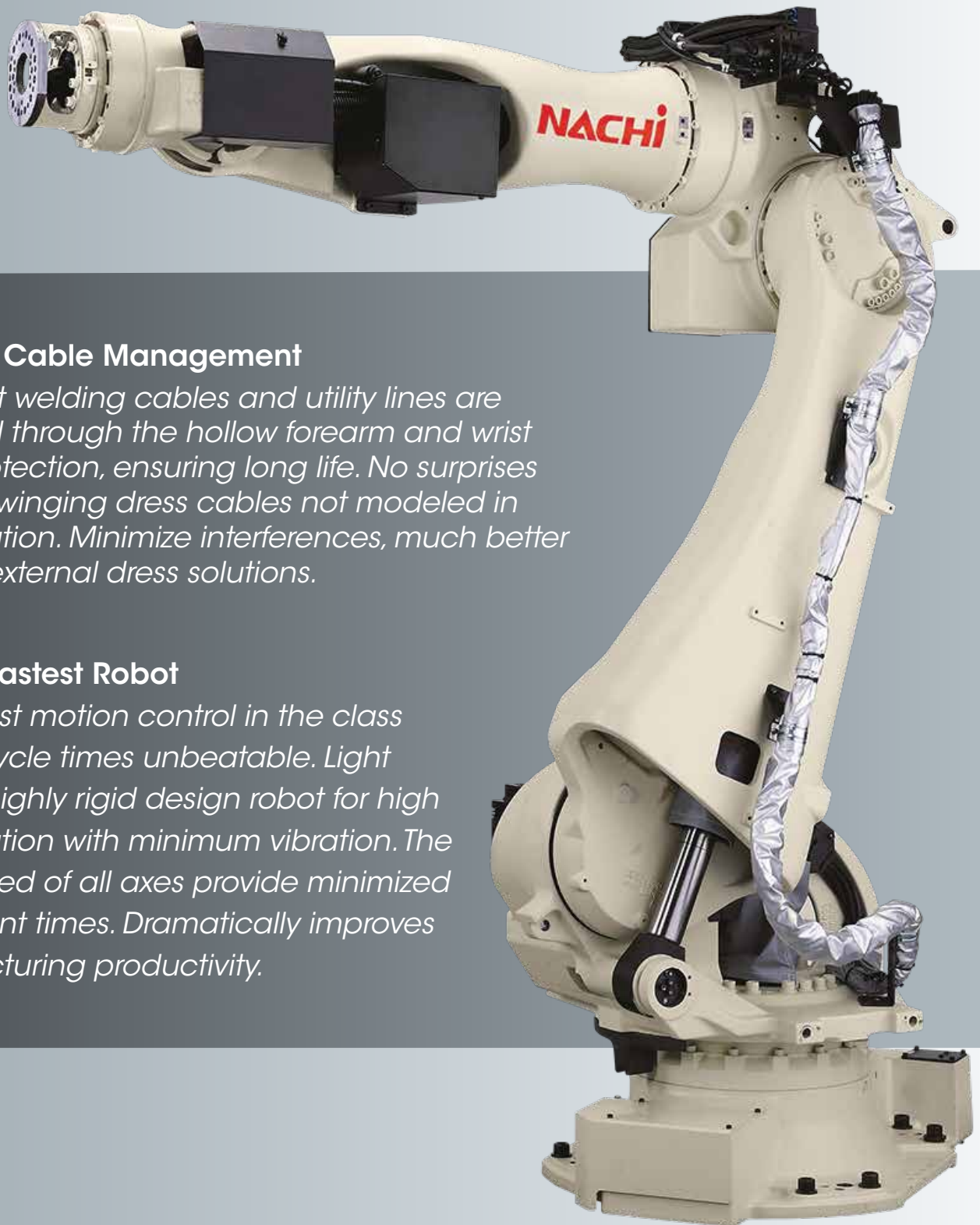


IN-Trac Cable Management System

SRA100H/SRA133HL



Smart Cable Management

- *Spot welding cables and utility lines are routed through the hollow forearm and wrist for protection, ensuring long life. No surprises from swinging dress cables not modeled in simulation. Minimize interferences, much better than external dress solutions.*

World's Fastest Robot

- *The best motion control in the class makes cycle times unbeatable. Light weight, highly rigid design robot for high acceleration with minimum vibration. The high speed of all axes provide minimized movement times. Dramatically improves manufacturing productivity.*

Robot specifications

Robot model		SRA100H	SRA100HL	
Structure		Articulated		
Number of axes		6		
Drive system		AC servo system		
Max. working envelope	Arm	J1 Swivel	$\pm 3.14\text{rad}$ ($\pm 180^\circ$)	
		J2 Horizontal	-1.40 to +1.05rad (-80° to $+60^\circ$)	
		J3 Vertical	-2.56 to +2.62rad (-146.5° to $+150^\circ$)	-2.33 to +2.62rad (-133.4° to $+150^\circ$)
	Wrist	J4 Rotation 2	$\pm 3.66\text{rad}$ ($\pm 210^\circ$)	
		J5 Bend	$\pm 2.18\text{rad}$ ($\pm 125^\circ$)	
		J6 Rotation 1	$\pm 3.66\text{rad}$ ($\pm 210^\circ$)	
Max. speed	Arm	J1 Swivel	2.18rad/s (125°/s)	2.01rad/s (115°/s)
		J2 Horizontal	2.00rad/s (115°/s)	1.83rad/s (105°/s)
		J3 Vertical	2.11rad/s (121°/s)	1.97rad/s (113°/s)
	Wrist	J4 Rotation 2	3.66rad/s (210°/s)	
		J5 Bend	3.05rad/s (175°/s)	
		J6 Rotation 1	5.41rad/s (310°/s)	
Payload	Wrist	100kg	133kg	
	Forearm *1	20kg		
Allowable static load torque	J4 Rotation 2	830N-m		
	J5 Bend	830N-m		
	J6 Rotation 1	441N-m		
Max. Allowable moment of inertia *2	J4 Rotation 2	85kg-m ²		
	J5 Bend	85kg-m ²		
	J6 Rotation 1	45kg-m ²		
Max. reach		2,654mm	2,951mm	
Position repeatability *3		$\pm 0.1\text{mm}$	$\pm 0.15\text{mm}$	
Installation		Floor		
Ambient conditions		Ambient temperature : 0 to 45°C *4 Ambient humidity : 20to85%RH (without condensation) Vibration : Not more than 0.5G (4.9m/s ²)		
Weight		1040kg	1070kg	

1[rad]=180/π[°] 1[N-m]=1/9.8[kgf-m]

(*) On controller display, axis 1 to 6 is displayed as J1 to J6 for each.

(*) The specification and externals described in this specifications might change without a previous notice for the improvement.

(*) Explosion proof is not available.

(*1) Load specification of number 1 arm varies according to wrist load conditions and installation position.

(*2) Note that the allowable moment of inertia of wrist varies with the wrist load conditions.

(*3) JIS B 8432 compliant.

(*4) Permitted height is not higher than 1,000m above sea level. If used in higher place, permitted temperature is affected by height.

NACHI
ROBOTIC SYSTEMS, INC.

www.nachirobotics.com

NACHI ROBOTIC SYSTEMS INC.
NACHI AMERICA INC. HEADQUARTERS
NACHI CANADA INC.
NACHI MEXICANA, S.A. DE C.V.
NACHI BRASIL LTDA.
NACHI EUROPE GmbH
NACHI TECHNOLOGY (THAILAND) CO., LTD.
NACHI SINGAPORE PTE. LTD.
PT.NACHI INDONESIA
NACHI TECHNOLOGY INDIA PVT. LTD.
NACHI-FUJIKOSHI (CHINA) CO., LTD.

Michigan, U.S.A.
Indiana, U.S.A.
CANADA
MEXICO
BRASIL
GERMANY
THAILAND
SINGAPORE
INDONESIA
INDIA
CHINA

Tel: +1-248-305-6545
Tel: +1-317-530-1001
Tel: +1-905-660-0088
Tel: +52-442-153-2424
Tel: +55-11-4793-8800
Tel: +49-(0)2151-65046-0
Tel: +66(38)961679
Tel: +65-65587393
Tel: +62-21-527-2841
Tel: +91-(0)14-9467-1300
Tel: +86-(0)21-6915-2200

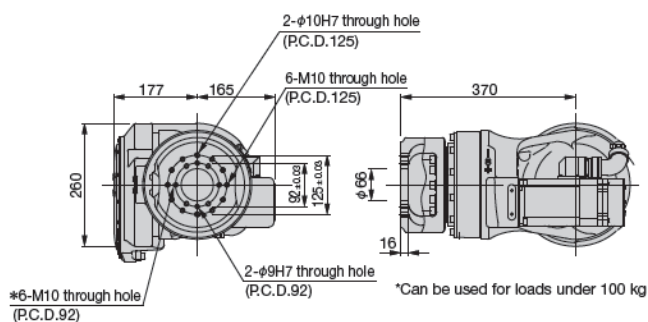
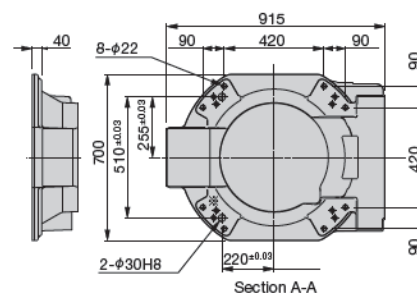
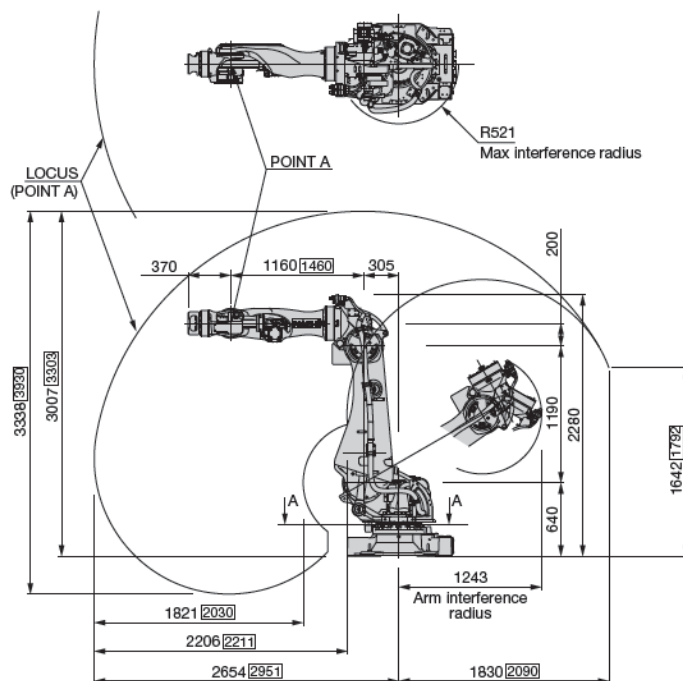
Fax: +1-248-305-6542
Fax: +1-317-530-1011
Fax: +1-905-660-1146
Fax: +52-442-153-2435
Fax: +55-11-4793-8870
Fax: +49-(0)2151-65046-90
Fax: +66(38)961683
Fax: +65-65587371
Fax: +62-21-527-3029
Fax: +91-(0)14-9467-1310
Fax: +86-(0)21-6915-5427

http://www.nachirobotics.com
http://www.nachiamerica.com/
http://www.nachicanada.com/
http://www.nachi.com.mx/
http://www.nachi.com.br/
http://www.nachi.de/
http://www.nachi.co.th/
http://www.nachinip.com.sg/
http://www.nachi.co.id/

https://www.nachi.com.cn/

Exterior dimensions and working envelope

*Data shown in □ for SRA133HL-01.



*Can be used for loads under 100 kg

●The specifications are subject to changes without notice.

●In case that an end user uses this product for military purpose or production of weapon, this product may be liable for the subject of export restriction stipulated in the Foreign Exchange and Foreign Trade Act. Please go through careful investigation and necessary formalities for export.