

# **MT** *SERIES* **MACHINE TENDER**

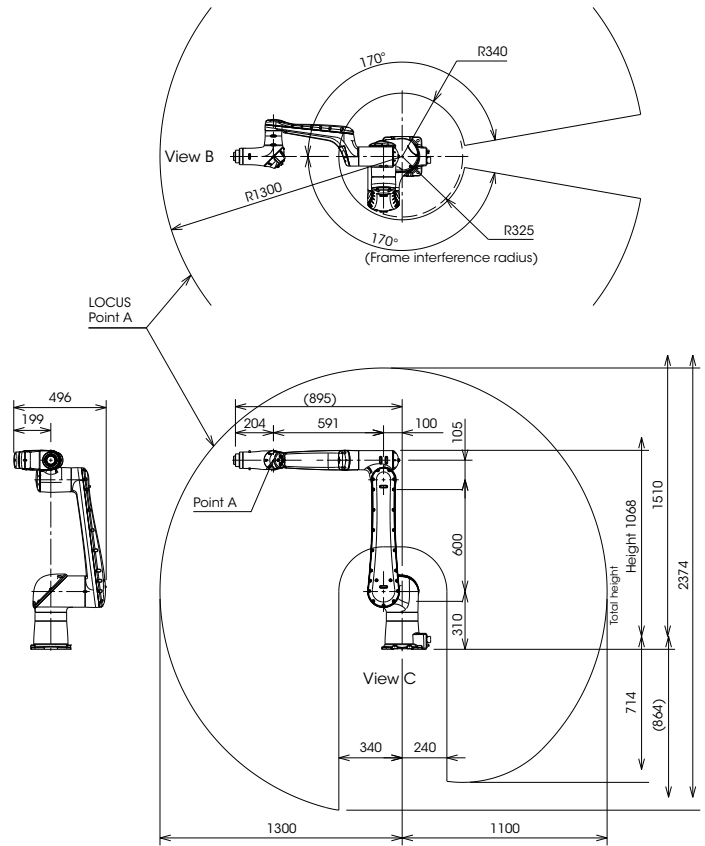
The mobile tender, equipped with the collaborative CZ10 robot, accurately tends to machines and assists in various automation tasks. Easily move the cart between workstations with a quick disconnect option.



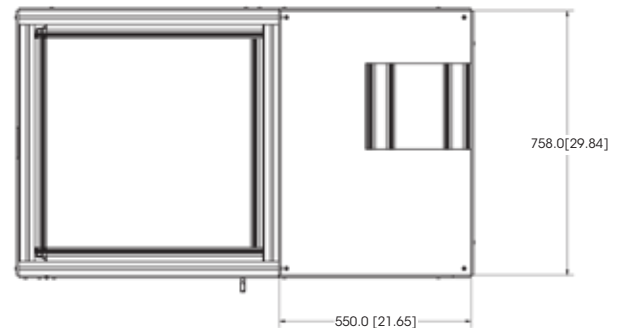
## Basic Specification of Robot

Item	Specification	
Robot type	CZ10	
Number of axis	6	
Drive system	AC servo motor	
Max. working envelope	Axis 1	$\pm 2.96\text{rad}$ ( $\pm 170^\circ$ )
	Axis 2	$-1.30 \sim +3.92\text{rad}$ ( $-75 \sim +225^\circ$ )
	Axis 3	$-1.34 \sim +3.96\text{rad}$ ( $-77 \sim +227^\circ$ )
	Axis 4	$\pm 3.14\text{rad}$ ( $\pm 180^\circ$ )
	Axis 5	$\pm 2.96\text{rad}$ ( $\pm 170^\circ$ )
	Axis 6	$\pm 6.28\text{rad}$ ( $\pm 360^\circ$ )
Max. speed *1	Axis 1	$2.09\text{rad/s}$ ( $120^\circ/\text{s}$ )
	Axis 2	$2.09\text{rad/s}$ ( $120^\circ/\text{s}$ )
	Axis 3	$3.14\text{rad/s}$ ( $180^\circ/\text{s}$ )
	Axis 4	$3.14\text{rad/s}$ ( $180^\circ/\text{s}$ )
	Axis 5	$3.14\text{rad/s}$ ( $180^\circ/\text{s}$ )
	Axis 6	$3.14\text{rad/s}$ ( $180^\circ/\text{s}$ )
Max. payload	Wrist 10kg	
Allowable static load torque	Axis 4	$25.9\text{N}\cdot\text{m}$
	Axis 5	$25.9\text{N}\cdot\text{m}$
	Axis 6	$5.9\text{N}\cdot\text{m}$
Allowable moment of inertia *2	Axis 4	$0.75\text{kg}\cdot\text{m}^2$
	Axis 5	$0.75\text{kg}\cdot\text{m}^2$
	Axis 6	$0.08\text{kg}\cdot\text{m}^2$
Position repeatability *3	$\pm 0.1\text{mm}$	
Max. reach	1300mm	
Air piping	$\phi 4 \times 1$	
I/O on the wrist part	Dlx4, DOx3	
Installation	Cart	
Ambient conditions	Temperature: $0 \sim 45^\circ\text{C}$ *4 Humidity: $20 \sim 85\% \text{RH}$ (No dew condensation) Vibration to the installation face: $0.5\text{G}$ ( $4.9\text{m/s}^2$ ) or less	
Dust-proof Drip-proof performance *5	IP54 equivalent (dust and drain proof-type)	
Robot mass	61kg	
Safety certification	Conforming to ISO 10218-1 *6 Conforming to TS 15066	

## Robot Dimensions and Working Envelope



## Cart Dimensions



**NACHI**  
ROBOTIC SYSTEMS INC.

[www.nachirobotics.com](http://www.nachirobotics.com)

NACHI ROBOTIC SYSTEMS INC.  
NACHI AMERICA INC. HEADQUARTERS  
NACHI CANADA INC.  
NACHI MEXICANA, S.A. DE C.V.  
NACHI BRASIL LTDA.  
NACHI EUROPE GmbH  
NACHI TECHNOLOGY (THAILAND) CO., LTD.  
NACHI SINGAPORE PTE. LTD.  
PT.NACHI INDONESIA  
NACHI TECHNOLOGY INDIA PVT. LTD.  
NACHI-FUJIKOSHI (CHINA) CO., LTD.

Michigan, U.S.A.  
Indiana, U.S.A.  
CANADA  
MEXICO  
BRASIL  
GERMANY  
THAILAND  
SINGAPORE  
INDONESIA  
INDIA  
CHINA

Tel: +1-248-305-6545  
Tel: +1-317-530-1001  
Tel: +1-905-660-0088  
Tel: +52-442-153-2424  
Tel: +55-11-4793-8800  
Tel: +49-(0)2151-65046-0  
Tel: +66(38)961679  
Tel: +65-65587393  
Tel: +62-21-527-2841  
Tel: +91-(0)14-9467-1300  
Tel: +86-(0)21-6915-2200

Fax: +1-248-305-6542  
Fax: +1-317-530-1011  
Fax: +1-905-660-1146  
Fax: +52-442-153-2435  
Fax: +55-11-4793-8870  
Fax: +49-(0)2151-65046-90  
Fax: +66(38)961683  
Fax: +65-65587371  
Fax: +62-21-527-3029  
Fax: +91-(0)14-9467-1310  
Fax: +86-(0)21-6915-5427

<http://www.nachirobotics.com>  
<http://www.nachiamerica.com/>  
<http://www.nachicanada.com/>  
<http://www.nachi.com.mx/>  
<http://www.nachi.com.br/>  
<http://www.nachi.de/>  
<http://www.nachi.co.th/>  
<http://www.nachinip.com.sg/>  
<http://www.nachi.co.id/>  
<https://www.nachi.com.cn/>

\*The specifications are subject to changes without notice.

\*In case that an end user uses this product for military purpose or production of weapon, this product may be liable for the subject of export restriction stipulated in the Foreign Exchange and Foreign Trade Act. Please go through careful investigation and necessary formalities for export.