

MT *SERIES* **MACHINE TENDER**

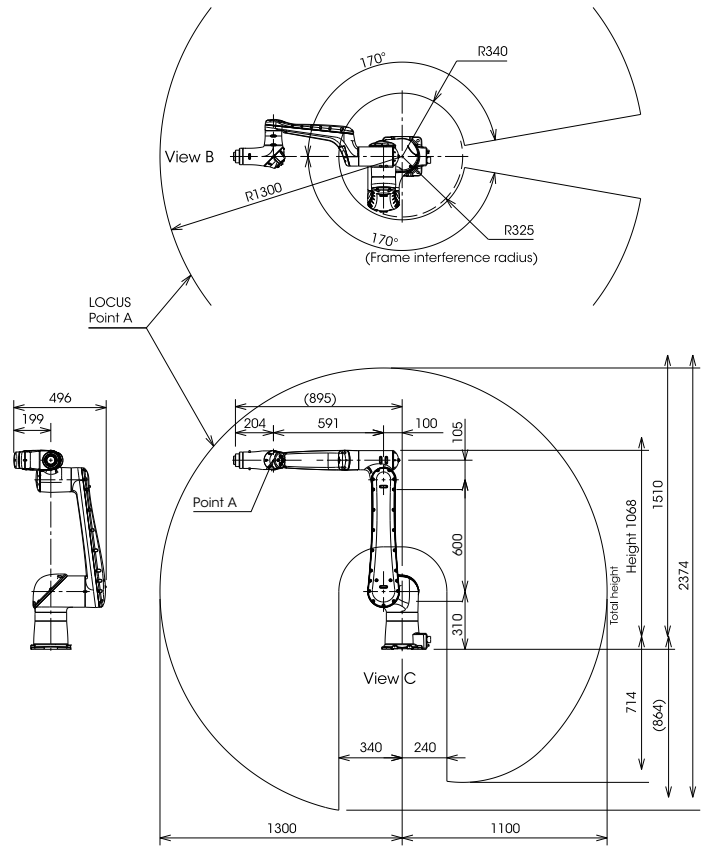
The mobile tender, equipped with the collaborative CZ10 robot, accurately tends to machines and assists in various automation tasks. Easily move the cart between workstations with a quick disconnect option.



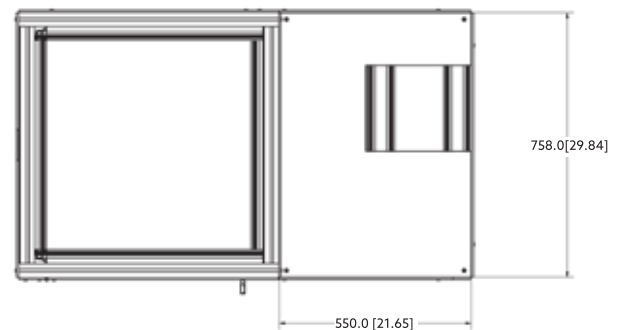
Basic Specification of Robot

Item	Specification	
Robot type	CZ10	
Number of axis	6	
Drive system	AC servo motor	
Max. working envelope	Axis 1	$\pm 2.96\text{rad}$ ($\pm 170^\circ$)
	Axis 2	$-1.30 \sim +3.92\text{rad}$ ($-75 \sim +225^\circ$)
	Axis 3	$-1.34 \sim +3.96\text{rad}$ ($-77 \sim +227^\circ$)
	Axis 4	$\pm 3.14\text{rad}$ ($\pm 180^\circ$)
	Axis 5	$\pm 2.96\text{rad}$ ($\pm 170^\circ$)
	Axis 6	$\pm 6.28\text{rad}$ ($\pm 360^\circ$)
Max. speed *1	Axis 1	2.09rad/s ($120^\circ/\text{s}$)
	Axis 2	2.09rad/s ($120^\circ/\text{s}$)
	Axis 3	3.14rad/s ($180^\circ/\text{s}$)
	Axis 4	3.14rad/s ($180^\circ/\text{s}$)
	Axis 5	3.14rad/s ($180^\circ/\text{s}$)
	Axis 6	3.14rad/s ($180^\circ/\text{s}$)
Max. payload	Wrist 10kg	
Allowable static load torque	Axis 4	$25.9\text{N}\cdot\text{m}$
	Axis 5	$25.9\text{N}\cdot\text{m}$
	Axis 6	$5.9\text{N}\cdot\text{m}$
Allowable moment of inertia *2	Axis 4	$0.75\text{kg}\cdot\text{m}^2$
	Axis 5	$0.75\text{kg}\cdot\text{m}^2$
	Axis 6	$0.08\text{kg}\cdot\text{m}^2$
Position repeatability *3	$\pm 0.1\text{mm}$	
Max. reach	1300mm	
Air piping	$\phi 4 \times 1$	
I/O on the wrist part	DIx4, DOx3	
Installation	Cart	
Ambient conditions	Temperature: $0 \sim 45^\circ\text{C}$ *4 Humidity: $20 \sim 85\% \text{RH}$ (No dew condensation) Vibration to the installation face: 0.5G (4.9m/s^2) or less	
Dust-proof Drip-proof performance *5	IP54 equivalent (dust and drain proof-type)	
Robot mass	61kg	
Safety certification	Conforming to ISO 10218-1 *6 Conforming to TS 15066	

Robot Dimensions and Working Envelope



Cart Dimensions



NACHI
ROBOTIC SYSTEMS INC.

www.nachirobotics.com

NACHI ROBOTIC SYSTEMS INC.
NACHI AMERICA INC. HEADQUARTERS
NACHI CANADA INC.
NACHI MEXICANA, S.A. DE C.V.
NACHI BRASIL LTDA.
NACHI EUROPE GmbH
NACHI TECHNOLOGY (THAILAND) CO., LTD.
NACHI SINGAPORE PTE. LTD.
PT. NACHI INDONESIA
NACHI TECHNOLOGY INDIA PVT. LTD.
NACHI-FUJIKOSHI (CHINA) CO., LTD.

Michigan, U.S.A.
Indiana, U.S.A.
CANADA
MEXICO
BRASIL
GERMANY
THAILAND
SINGAPORE
INDONESIA
INDIA
CHINA

Tel: +1-248-305-6545
Tel: +1-317-530-1001
Tel: +1-905-660-0088
Tel: +52-442-153-2424
Tel: +55-11-4793-8800
Tel: +49-(0)2151-65046-0
Tel: +66(38)961679
Tel: +65-65587393
Tel: +62-21-527-2841
Tel: +91-(0)14-9467-1300
Tel: +86-(0)21-6915-2200

Fax: +1-248-305-6542
Fax: +1-317-530-1011
Fax: +1-905-660-1146
Fax: +52-442-153-2435
Fax: +55-11-4793-8870
Fax: +49-(0)2151-65046-90
Fax: +66(38)961683
Fax: +65-65587371
Fax: +62-21-527-3029
Fax: +91-(0)14-9467-1310
Fax: +86-(0)21-6915-5427

<http://www.nachirobotics.com>
<http://www.nachiamerica.com/>
<http://www.nachicanada.com/>
<http://www.nachi.com.mx/>
<http://www.nachi.com.br/>
<http://www.nachi.de/>
<http://www.nachi.co.th/>
<http://www.nachinip.com.sg/>
<http://www.nachi.co.id/>
<https://www.nachi.com.cn/>

*The specifications are subject to changes without notice.

*In case that an end user uses this product for military purpose or production of weapon, this product may be liable for the subject of export restriction stipulated in the Foreign Exchange and Foreign Trade Act. Please go through careful investigation and necessary formalities for export.